



VAJRA PROPERTIES
Promoted by **Gullapalli & Co**

Brochure for VAJRA NEST APPARTMENTS

2 & 3 Bedroom Luxury apartments @ **CHANDANAGAR, HYDERABAD**

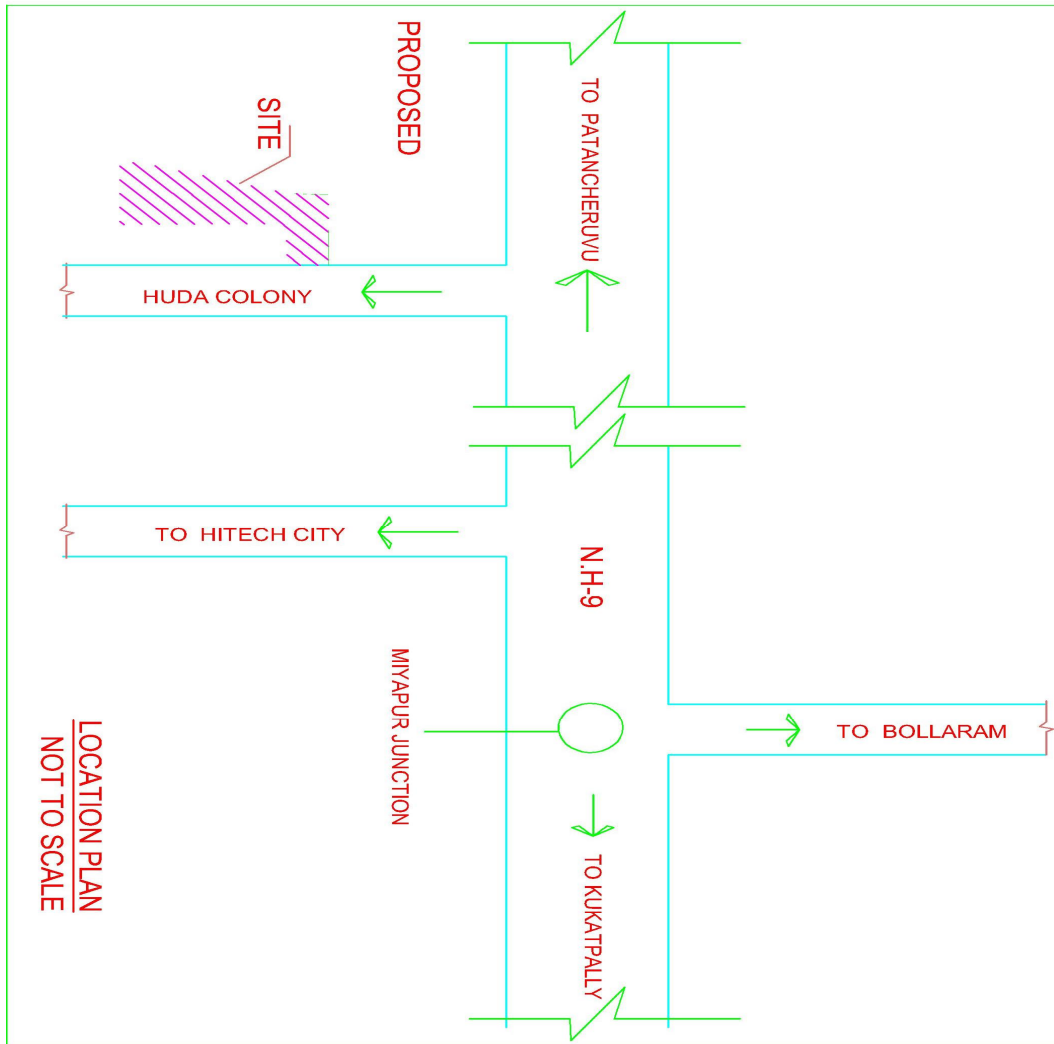


For Sales Please Contact:

Call : +91 9441229388
USA : +1 248 505 8832 Contact: Mr.Ravi Gullapalli
E-mail : vajraproperties@gmail.com

Corporate Address : Flat No. 1H
Movva Nest Appartments
NizamPet Road
Kukatpally, Hyderabad.

LOCATION MAP



- Situated in an established HUDA developed residential layout.
- Off the Bombay Highway.
- 1 KM from Chandanagar MMTS station.
- Easy access to the IT-HUB, Industries and JNTU.

FLOOR PLAN

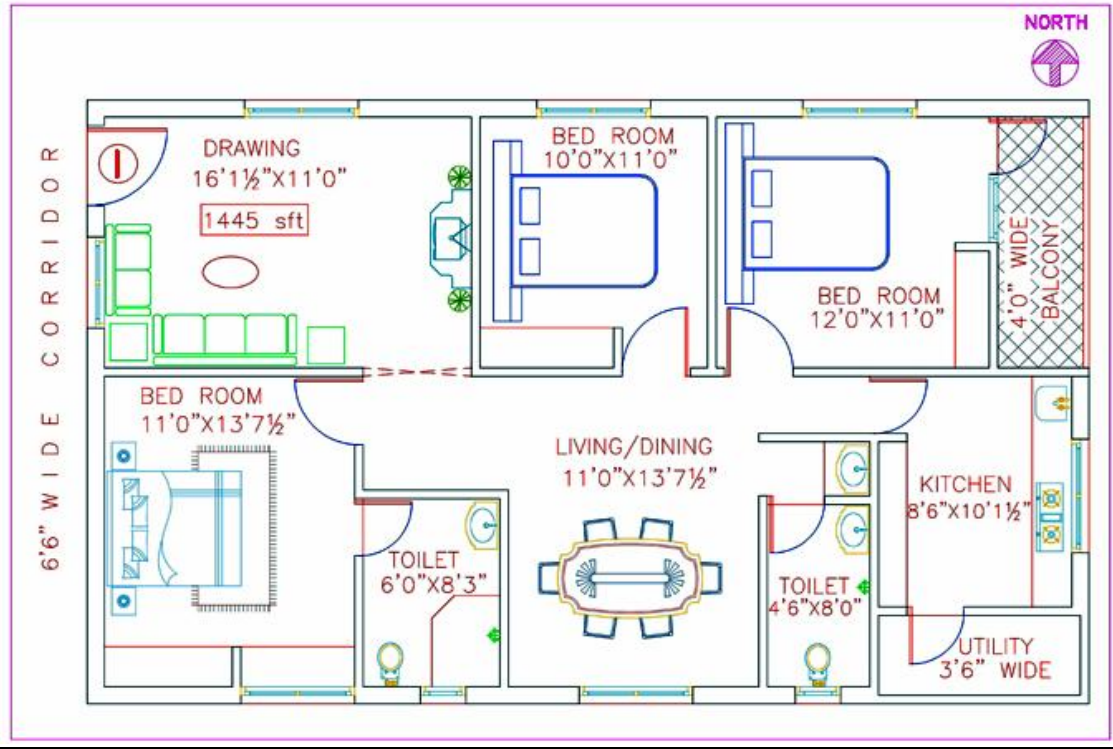


TYPICAL FLOOR PLAN

Floor Plans

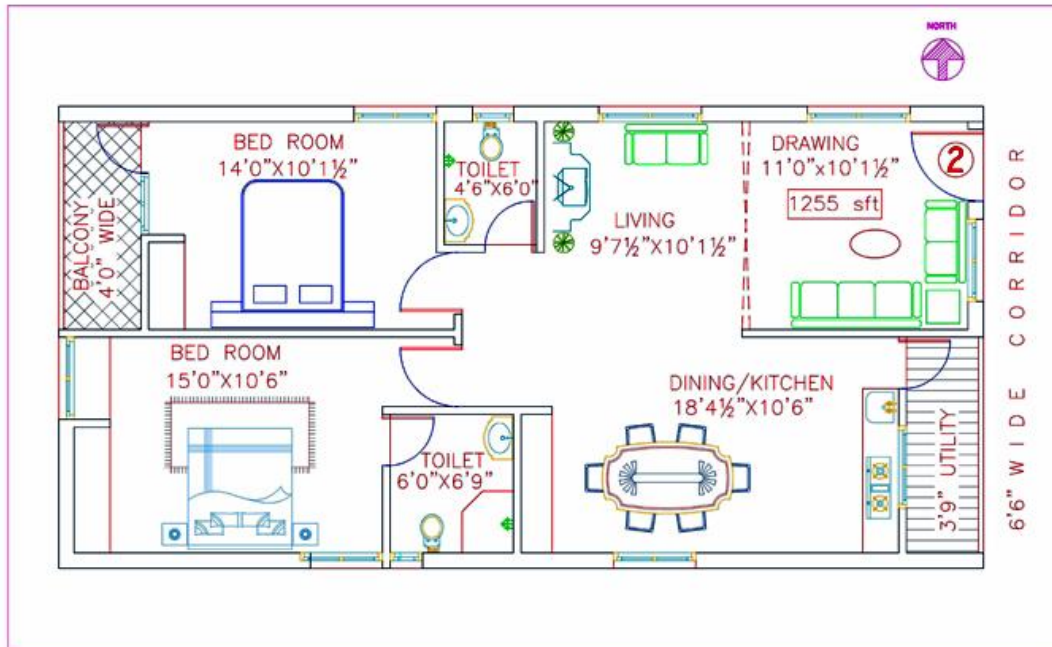
Type 1

Total Area: 1445 sft



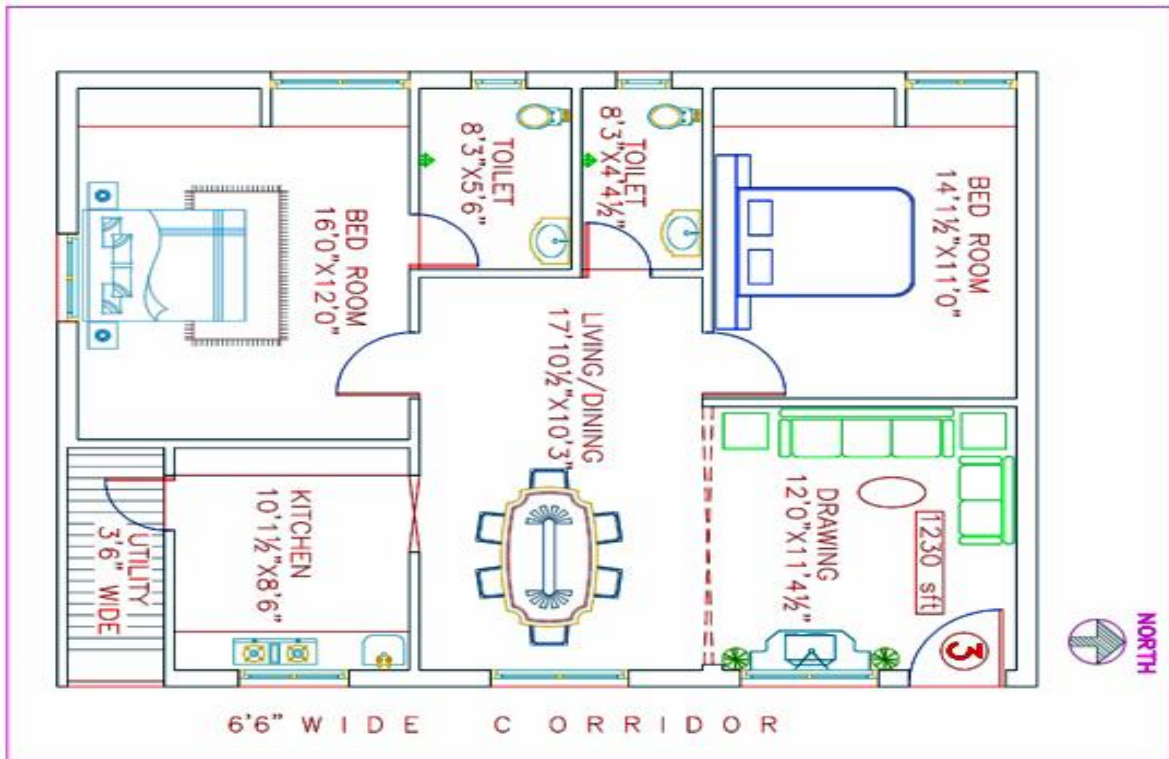
Type 2

Total Area: 1255 sft



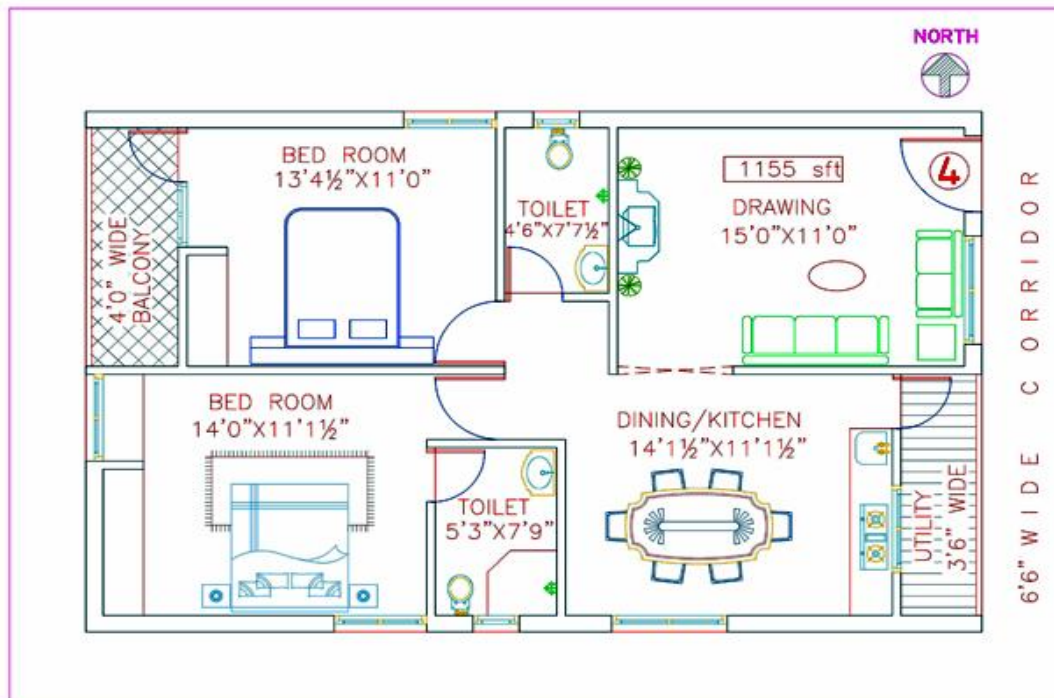
Type 3:

Total Area: 1230 sft



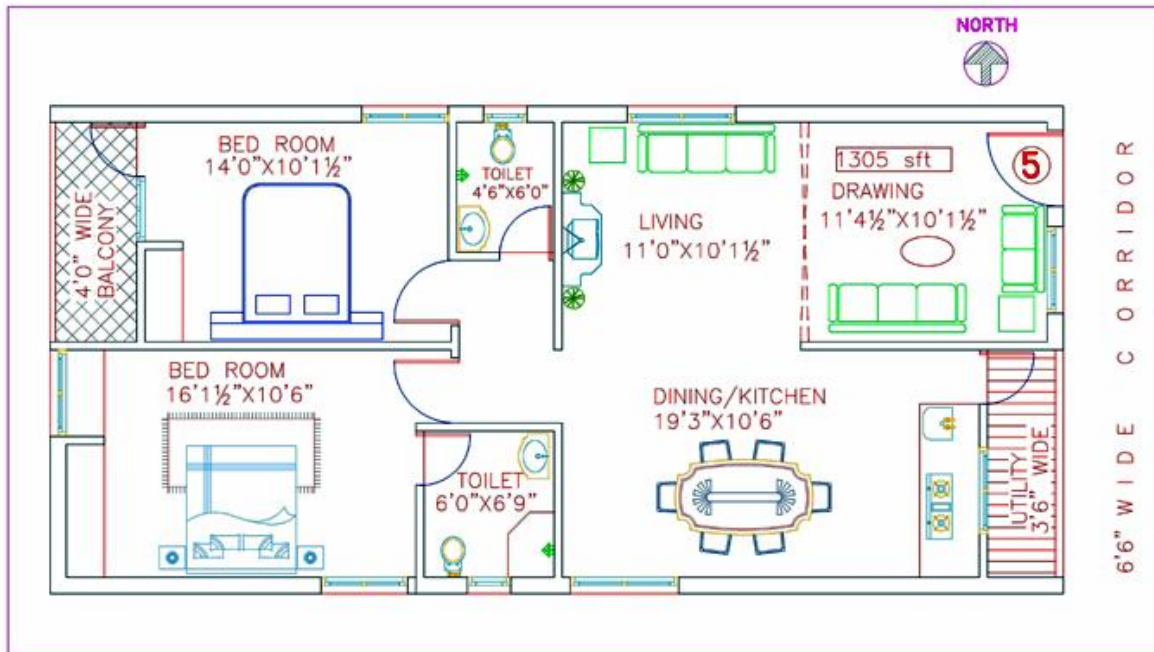
Type 4

Total area: 1155 sft



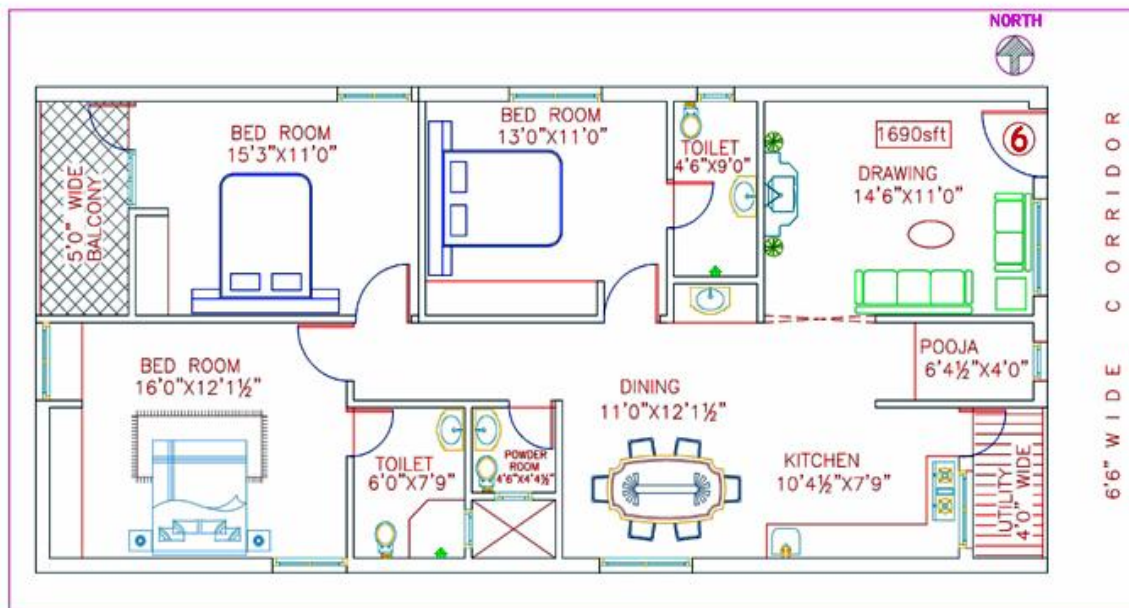
Type 5

Total Area: 1305 sft



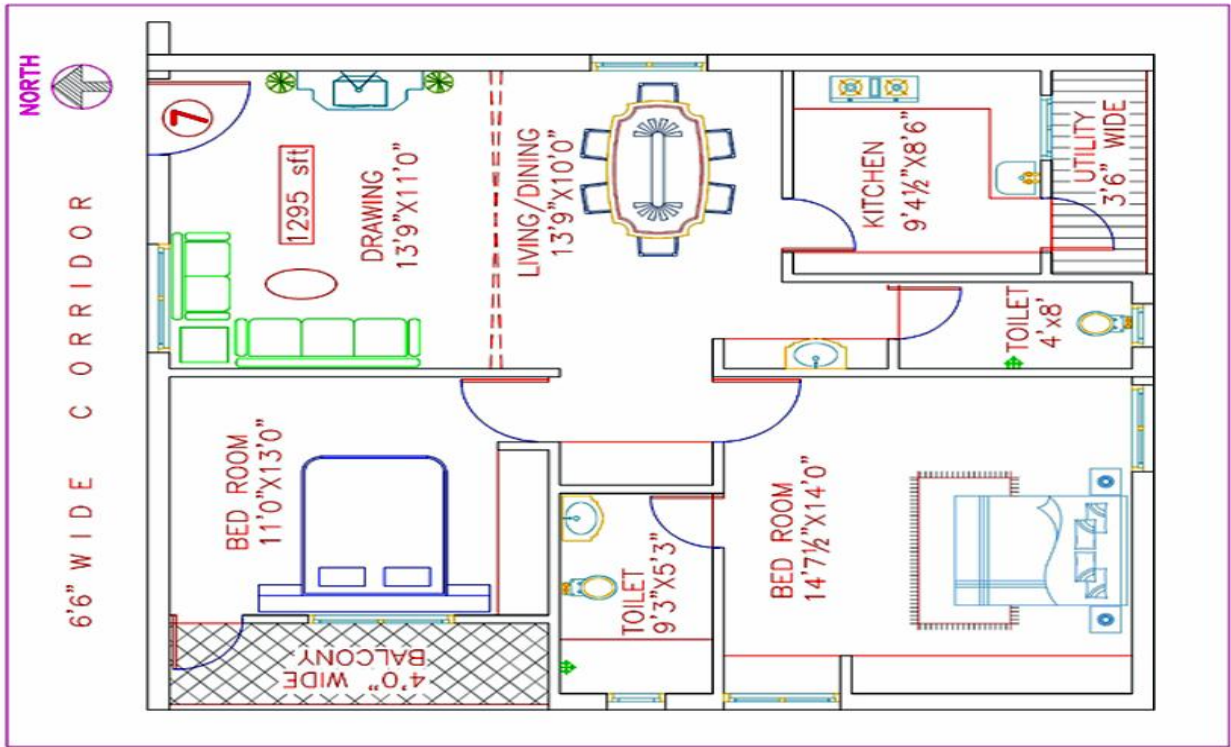
Type 6

Total Area: 1690 sft



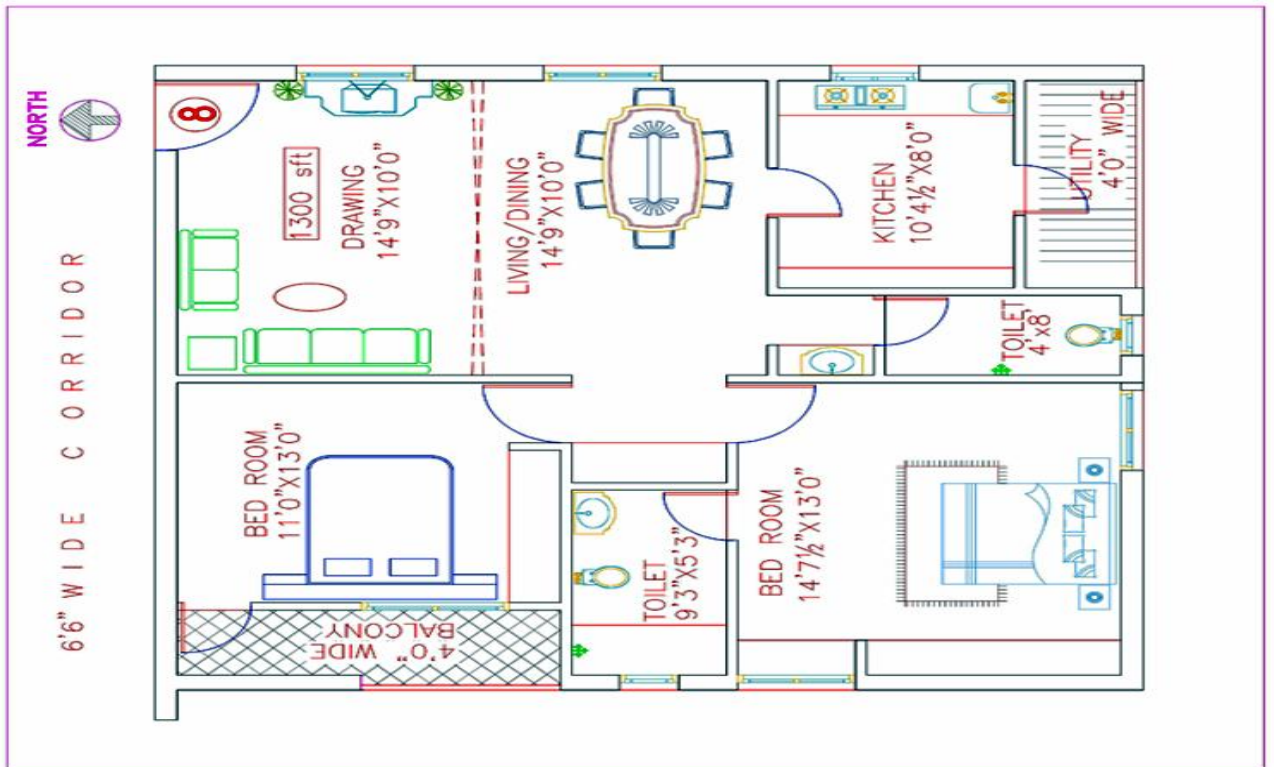
Type 7

Total Area: 1295 sft



Type 8

Total Area: 1300 sft



AMENITIES & SALIENT FEATURES:

- Gated and secure community.
- Within 1KM from Chandanagar and Lingampally MMTS stations.
- Off Bombay Highway
- 2 and 3 bedroom Flats.
- 2 Lifts and 2 stair cases for easy access.
- Generator for Backup power
- Intercom facility for security.
- Children Play Area – TOT LOT
- **Manjeera** water, Bore water is supplied through sump and overhead tank.
- Parking in Cellar and Stilt
- No Common wall between flats with a minimum 6.5ft.
- **GHMC APPROVED PLAN as per GO No.86.**

FLAT SPECIFICATIONS:

STRUCTURE : R.C.C. Framed Structure

SUPER STRUCTRE : Good quality Bricks with cement mortar

DOORS : Main Door Teak frame with teak wood shutters, Internal with Flush door shutters.

WINDOWS : Aluminum Frames and shutters with mosquito net, M.S. Plain Safety grills 4mm thick glass.

INTERNAL WALLS : Cement plastered surface treated with luppam putty with plastic Emulsion.

EXTERNAL WALLS: Dubara sponge finished cement plastered surface with water Proof cement paint.

FLOORING : **2 X 2 Vitrified Tiles**. Anti skid ceramic tiles flooring for toilets.

KITCHEN : **Modular kitchen** with framed shutters and granite slab platform with Stainless steel sinks.

TOILETS : Johnson Ceramic tile dado up to 6'-0" Height or similar.

SANITARY : CP fittings of **Jaguar make and Parry** sanitary ware or similar.

ELECTRICAL : Concealed piping with adequate points for power and light with North West switches.

TELEPHONE : Telephone & T.V. Points in M.Bedroom & hall with intercom.

CEILING : **FALSE CIELINNG** in Hall.